

E2701 BOTTOM HOSE LOADING ARM

Bottom Hose Loading Arm with unrestricted cross over and extended working envelope. EMCO WHEATON bottom loading is efficient loading of tank trucks.

FEATURES

- Petroleum applications
- Total **flexibility**
- Unrestricted crossover
- Time saving
- Long working life
- Minimal spillage
- Extended working envelope
- Reliable and well proven components:
 - EMCO carbon steel swivel joint
 - EMCO spring cylinder
 - Robust hose type
 - EMCO API dry break coupler
- Adequate space between loading arms and tank truck during filling
- Free access for operation and escape way
- Individual, customer designed units
- Special materials are available, e.g. stainless steel
- **Safe** working, **easy** operation and maintenance
- Over **40 years experience** in the field of fluid handling equipment
- Simultaneous loading of **5 different products**



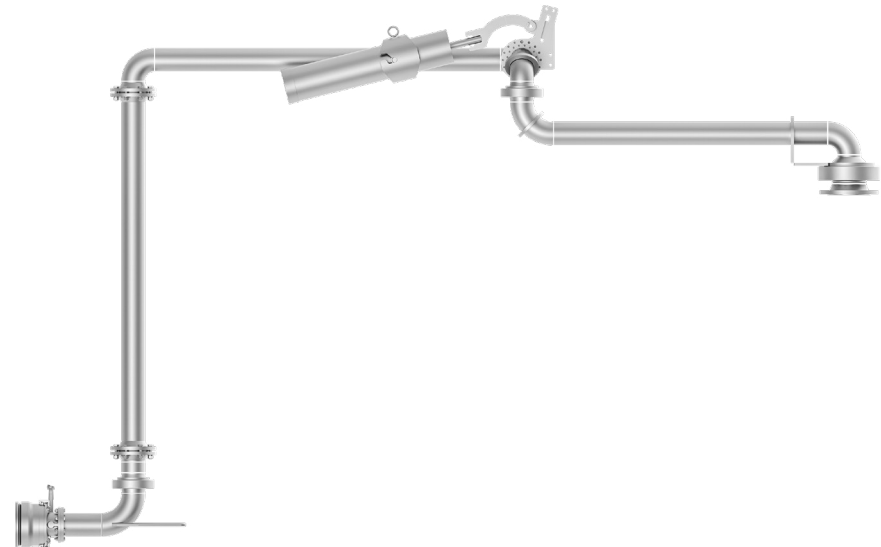
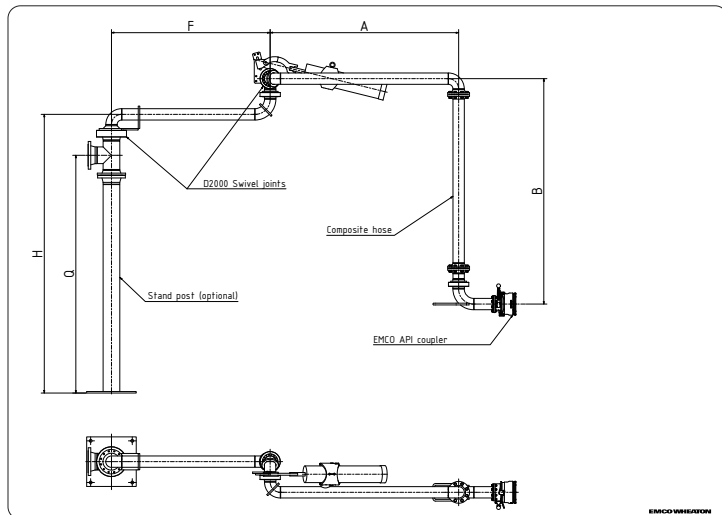
E2701 BOTTOM HOSE LOADING ARM

MATERIALS AND TECHNICAL DATA

E2701	F mm	A mm	A mm	H* mm	Q mm	Design	Weight kg
-001	1550	1800	1500	3000	by customer	right	450
-002	1400	1650	2250	3800		right	490
-003	1300	1550	3000	4500		right	530
-004	1400	1650	3750	5300		right	580
-005	1550	1800	4500	6000		right	625

* Based on size of foundation
Special designs available on request (e.g. with boom)

DIMENSIONS AND TECHNICAL DATA



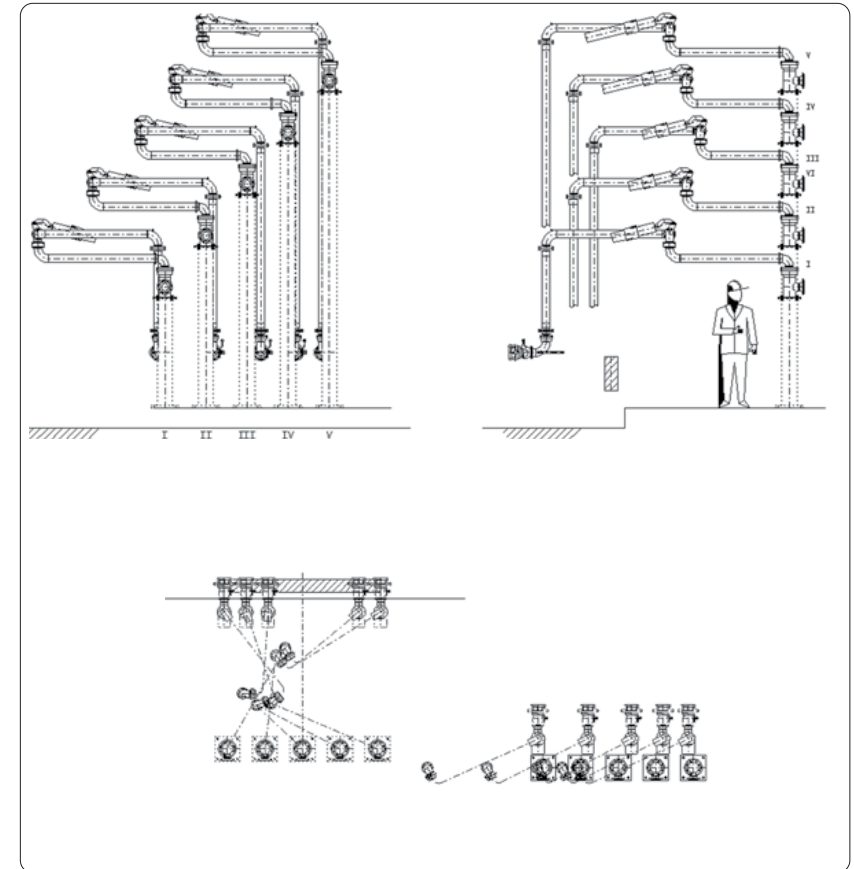
E2701 BOTTOM HOSE LOADING ARM



MAXIMUM
FLOW RATE

SEE OUR FULL
LOADING ARM RANGE

ENVELOPE DRAWING



EMCO
WHEATON

www.emcowheaton.com

[@EmcoWheaton](https://twitter.com/EmcoWheaton) | www.facebook.com/EmcoWheaton

©2020 Emco Wheaton. All Rights Reserved.
All trademarks are the property of Emco Wheaton.